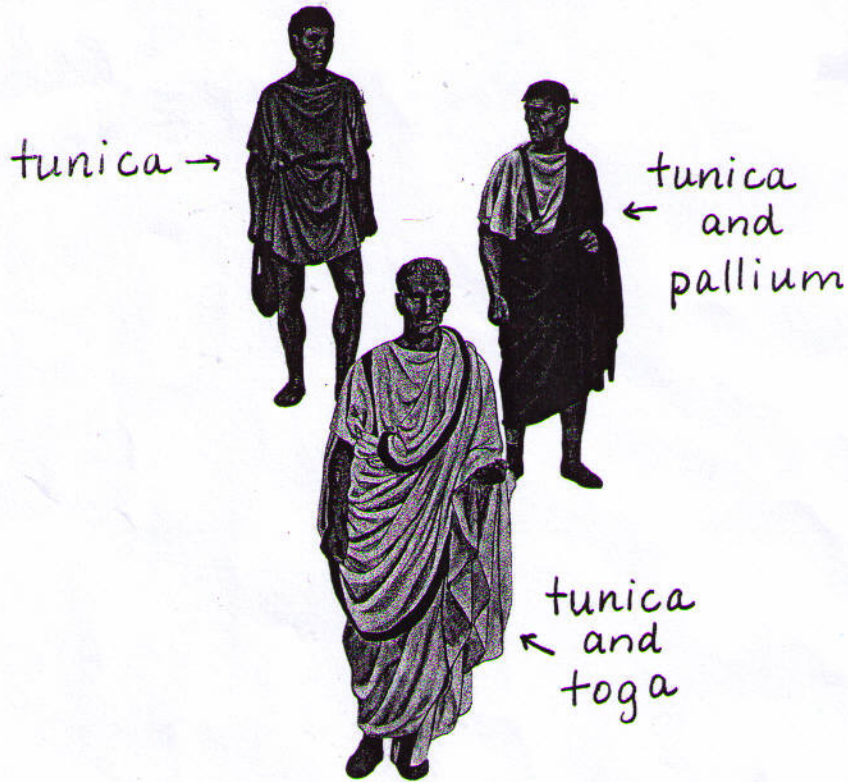


ROMAN DRESS

Most men (viri) wore a short, loose-fitting "tunica". For special occasions or important work, they wore a toga over the tunica. In colder weather, they might also wear a woolen cloak called a "pallium."



Women (feminae) wore a longer version of the men's tunica, called a "stola." Instead of a toga, they draped a cloak called a "palla" over their right shoulder and arm.

